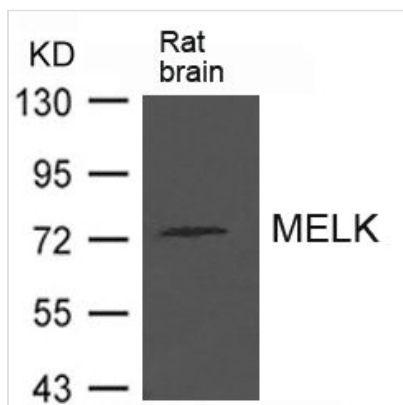




MELK Antibody

Product Code	CSB-PA582122
Storage	Upon receipt, store at -20°C or -80°C. Avoid repeated freeze.
Uniprot No.	Q14680
Immunogen	Peptide sequence around aa.626~630 (I-R-R-Q-R) derived from Human MELK.
Raised In	Rabbit
Species Reactivity	Human, Mouse
Specificity	The antibody detects endogenous level of total MELK protein.
Tested Applications	ELISA, WB; WB: 1:500-1:1000
Form	Supplied at 1.0mg/mL in phosphate buffered saline (without Mg ²⁺ and Ca ²⁺), pH 7.4, 150mM NaCl, 0.02% sodium azide and 50% glycerol.
Purification Method	Antibodies were produced by immunizing rabbits with synthetic peptide and KLH conjugates. Antibodies were purified by affinity-chromatography using epitope-specific peptide.
Clonality	Polyclonal
Alias	hPK38; KIAA0175; hMELK
Product Type	Polyclonal Antibody
Immunogen Species	Homo sapiens (Human)
Target Names	MELK

Image



Western blot analysis of extract from Rat brain tissue using MELK Antibody

Usage For Research Use Only. Not for use in diagnostic or therapeutic procedures.