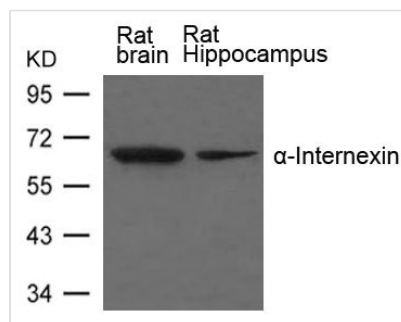




INA Antibody

Product Code	CSB-PA992889
Storage	Upon receipt, store at -20°C or -80°C. Avoid repeated freeze.
Uniprot No.	Q16352
Immunogen	Peptide sequence around aa.491~495 (E-T-T-I-S)
Raised In	Rabbit
Species Reactivity	Human
Specificity	The antibody detects endogenous level of total α -Internexin protein.
Tested Applications	ELISA,WB;WB:1:500-1:1000
Form	Supplied at 1.0mg/mL in phosphate buffered saline (without Mg ²⁺ and Ca ²⁺), pH 7.4, 150mM NaCl, 0.02% sodium azide and 50% glycerol.
Purification Method	Antibodies were produced by immunizing rabbits with synthetic peptide and KLH conjugates. Antibodies were purified by affinity-chromatography using epitope-specific peptide.
Clonality	Polyclonal
Alias	NEF5; NF-66; TXBP-1; FLJ18662; MGC12702
Product Type	Polyclonal Antibody
Immunogen Species	Homo sapiens (Human)
Target Names	INA

Image



Western blot analysis of extract from Rat brain and Rat hippocampus Tissue using α -Internexin Antibody

Usage

For Research Use Only. Not for use in diagnostic or therapeutic procedures.