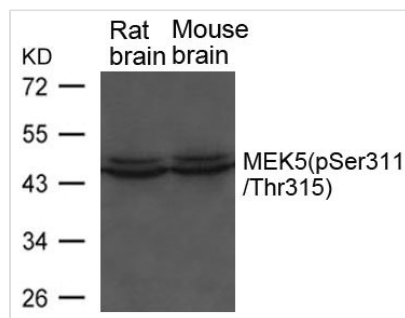




Phospho-Map2k5 (Ser311/Thr315) Antibody

Product Code	CSB-PA115933
Storage	Upon receipt, store at -20°C or -80°C. Avoid repeated freeze.
Uniprot No.	Q62862
Immunogen	Peptide sequence around phosphorylation site of Serine 311 and threonine 315 (V-N-S(p)I-A-K-T(p)-Y-V) derived from Rat MEK5.
Raised In	Rabbit
Species Reactivity	Human,Mouse,Rat
Specificity	The antibody detects endogenous level of MEK5 only when phosphorylated at serine 311 or threonine 315.
Tested Applications	ELISA,WB;WB:1:500-1:1000
Form	Supplied at 1.0mg/mL in phosphate buffered saline (without Mg ²⁺ and Ca ²⁺), pH 7.4, 150mM NaCl, 0.02% sodium azide and 50% glycerol.
Purification Method	Antibodies were produced by immunizing rabbits with synthetic phosphopeptide and KLH conjugates. Antibodies were purified by affinity-chromatography using epitope-specific phosphopeptide. Non-phospho specific antibodies were removed by chromatography using
Clonality	Polyclonal
Alias	Map2k5
Product Type	Polyclonal Antibody
Immunogen Species	Rattus norvegicus (Rat)
Target Names	Map2k5

Image



Western blot analysis of extracts from Rat and Mouse brain tissue using MEK5(phospho-Ser311/Thr315) Antibody.

Product Modify	Phospho-Ser311/Thr315
-----------------------	-----------------------