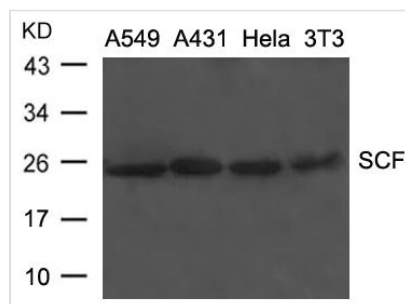




KITLG Antibody

Product Code	CSB-PA122514
Storage	Upon receipt, store at -20°C or -80°C. Avoid repeated freeze.
Uniprot No.	P21583
Immunogen	Peptide sequence around aa.265~269(E-K-E-R-E) derived from Human SCF.
Raised In	Rabbit
Species Reactivity	Human
Specificity	The antibody detects endogenous level of total SCF protein.
Tested Applications	ELISA,WB;WB:1:500-1:1000
Form	Supplied at 1.0mg/mL in phosphate buffered saline (without Mg ²⁺ and Ca ²⁺), pH 7.4, 150mM NaCl, 0.02% sodium azide and 50% glycerol.
Purification Method	Antibodies were produced by immunizing rabbits with synthetic peptide and KLH conjugates. Antibodies were purified by affinity-chromatography using epitope-specific peptide.
Clonality	Polyclonal
Alias	SF; MGF; FPH2; KL-1; Kitl
Product Type	Polyclonal Antibody
Immunogen Species	Homo sapiens (Human)
Target Names	KITLG

Image



Western blot analysis of extracts from A549, A431, HeLa and 3T3 cells using SCF Antibody.