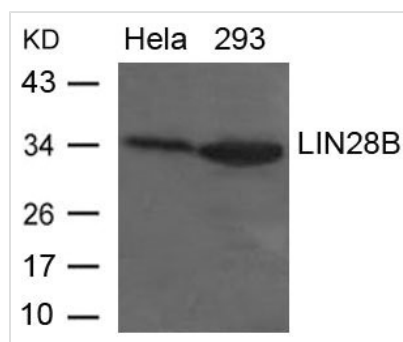




LIN28B Antibody

Product Code	CSB-PA637784
Storage	Upon receipt, store at -20°C or -80°C. Avoid repeated freeze.
Uniprot No.	Q6ZN17
Immunogen	Peptide sequence around aa.242~246(P-S-V-Q-K) derived from Human LIN28B
Raised In	Rabbit
Species Reactivity	Human
Specificity	The antibody detects endogenous levels of total LIN28B protein.
Tested Applications	ELISA,WB;WB:1:500-1:1000
Form	Supplied at 1.0mg/mL in phosphate buffered saline (without Mg ²⁺ and Ca ²⁺), pH 7.4, 150mM NaCl, 0.02% sodium azide and 50% glycerol.
Purification Method	Antibodies were produced by immunizing rabbits with synthetic peptide and KLH conjugates. Antibodies were purified by affinity-chromatography using epitope-specific peptide.
Clonality	Polyclonal
Alias	CSDD2; FLJ16517;
Product Type	Polyclonal Antibody
Immunogen Species	Homo sapiens (Human)
Target Names	LIN28B

Image



Western blot analysis of extracts from HeLa and 293 cells using LIN28B Antibody.