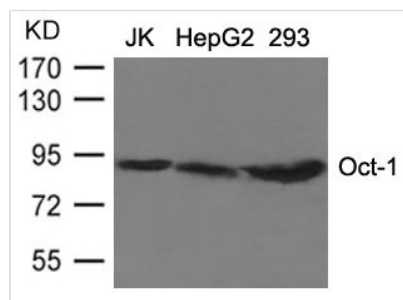




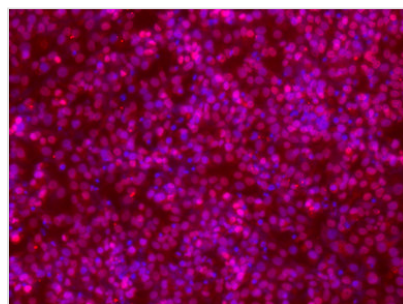
POU2F1 Antibody

Product Code	CSB-PA184871
Storage	Upon receipt, store at -20°C or -80°C. Avoid repeated freeze.
Uniprot No.	P14859
Immunogen	Peptide sequence around aa.270~274(T-P-K-R-I) derived from Human Oct-1.
Raised In	Rabbit
Species Reactivity	Human,Mouse,Rat
Specificity	The antibody detects endogenous levels of total Oct-1 protein.
Tested Applications	ELISA,WB,IF;WB:1:500-1:1000,IF:1:100-1:200
Form	Supplied at 1.0mg/mL in phosphate buffered saline (without Mg ²⁺ and Ca ²⁺), pH 7.4, 150mM NaCl, 0.02% sodium azide and 50% glycerol.
Purification Method	Antibodies were produced by immunizing rabbits with synthetic peptide and KLH conjugates. Antibodies were purified by affinity-chromatography using epitope-specific peptide.
Clonality	Polyclonal
Alias	1-Oct; OTF1; oct-1B
Product Type	Polyclonal Antibody
Immunogen Species	Homo sapiens (Human)
Target Names	POU2F1

Image



Western blot analysis of extracts from JK, HepG2 and 293 cells using Oct-1 Antibody.



Immunofluorescence staining of methanol-fixed NCI-h446 cells showing cytoplasmic staining using Oct-1 Antibody.

Usage For Research Use Only. Not for use in diagnostic or therapeutic procedures.