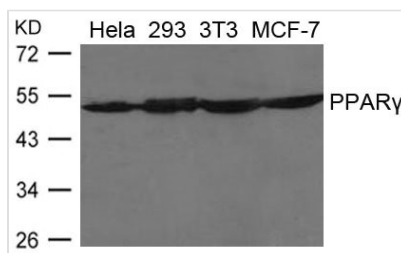




PPARG Antibody

Product Code	CSB-PA216430
Storage	Upon receipt, store at -20°C or -80°C. Avoid repeated freeze.
Uniprot No.	P37231
Immunogen	Peptide sequence around aa.50~54 (L-S-V-M-E) derived from Human PPARG
Raised In	Rabbit
Species Reactivity	Human,Mouse
Specificity	The antibody detects endogenous levels of total PPARG protein.
Tested Applications	ELISA,WB;WB:1:500-1:1000
Form	Supplied at 1.0mg/mL in phosphate buffered saline (without Mg ²⁺ and Ca ²⁺), pH 7.4, 150mM NaCl, 0.02% sodium azide and 50% glycerol.
Purification Method	Antibodies were produced by immunizing rabbits with synthetic peptide and KLH conjugates. Antibodies were purified by affinity-chromatography using epitope-specific peptide.
Clonality	Polyclonal
Alias	GLM1; NR1C3; PPARG1; PPARG2; PPARG
Product Type	Polyclonal Antibody
Immunogen Species	Homo sapiens (Human)
Target Names	PPARG

Image



Western blot analysis of extracts from HeLa, 293, 3T3 and MCF-7 cells using PPARG Antibody.