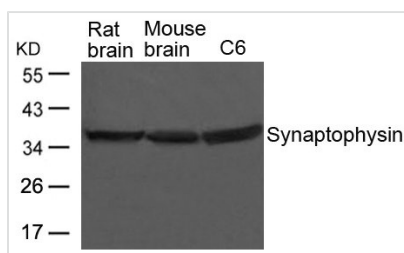




SYP Antibody

Product Code	CSB-PA763106
Storage	Upon receipt, store at -20°C or -80°C. Avoid repeated freeze.
Uniprot No.	P08247
Immunogen	Peptide sequence around aa.305~309(A-P-T-S-F) derived from Human Synaptophysin
Raised In	Rabbit
Species Reactivity	Human
Specificity	The antibody detects endogenous levels of total Synaptophysin protein.
Tested Applications	ELISA,WB;WB:1:500-1:1000
Form	Supplied at 1.0mg/mL in phosphate buffered saline (without Mg ²⁺ and Ca ²⁺), pH 7.4, 150mM NaCl, 0.02% sodium azide and 50% glycerol.
Purification Method	Antibodies were produced by immunizing rabbits with synthetic peptide and KLH conjugates. Antibodies were purified by affinity-chromatography using epitope-specific peptide.
Clonality	Polyclonal
Alias	MRXSYP
Product Type	Polyclonal Antibody
Immunogen Species	Homo sapiens (Human)
Target Names	SYP

Image



Western blot analysis of extracts from Rat and Mouse brain tissue and C6 cells using Synaptophysin Antibody.

Usage

For Research Use Only. Not for use in diagnostic or therapeutic procedures.