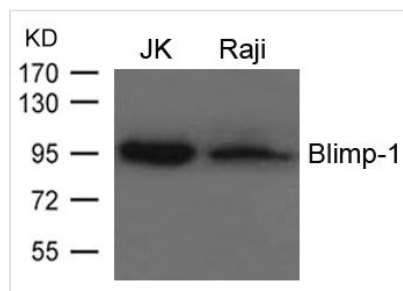




PRDM1 Antibody

| | |
|----------------------------|---|
| Product Code | CSB-PA193485 |
| Storage | Upon receipt, store at -20°C or -80°C. Avoid repeated freeze. |
| Uniprot No. | O75626 |
| Immunogen | Peptide sequence around aa.124~128(D-T-V-P-K) derived from Human Blimp-1 |
| Raised In | Rabbit |
| Species Reactivity | Human,Mouse,Rat |
| Specificity | The antibody detects endogenous levels of total Blimp-1 protein. |
| Tested Applications | ELISA,WB;WB:1:500-1:1000 |
| Form | Supplied at 1.0mg/mL in phosphate buffered saline (without Mg ²⁺ and Ca ²⁺), pH 7.4, 150mM NaCl, 0.02% sodium azide and 50% glycerol. |
| Purification Method | Antibodies were produced by immunizing rabbits with synthetic peptide and KLH conjugates. Antibodies were purified by affinity-chromatography using epitope-specific peptide. |
| Clonality | Polyclonal |
| Alias | PRDM1; PRDI-BF1; MGC118922; MGC118923; MGC118924 |
| Product Type | Polyclonal Antibody |
| Immunogen Species | Homo sapiens (Human) |
| Target Names | PRDM1 |

Image



Western blot analysis of extracts from JK and Raji cells using Blimp-1 Antibody.