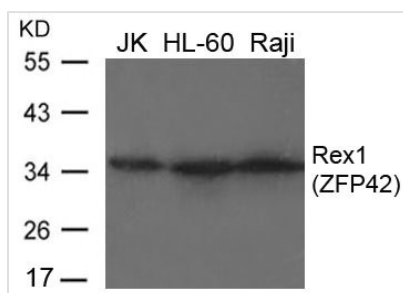




ZFP42 Antibody

Product Code	CSB-PA151362
Storage	Upon receipt, store at -20°C or -80°C. Avoid repeated freeze.
Uniprot No.	Q96MM3
Immunogen	Peptide sequence around aa.10~14(K-T-R-H-Q) derived from Human Rex1(ZFP42).
Raised In	Rabbit
Species Reactivity	Human
Specificity	The antibody detects endogenous level of total Rex1(ZFP42) protein.
Tested Applications	ELISA,WB;WB:1:500-1:1000
Form	Supplied at 1.0mg/mL in phosphate buffered saline (without Mg ²⁺ and Ca ²⁺), pH 7.4, 150mM NaCl, 0.02% sodium azide and 50% glycerol.
Purification Method	Antibodies were produced by immunizing rabbits with synthetic peptide and KLH conjugates. Antibodies were purified by affinity-chromatography using epitope-specific peptide.
Clonality	Polyclonal
Alias	REX1; ZNF754;
Product Type	Polyclonal Antibody
Immunogen Species	Homo sapiens (Human)
Target Names	ZFP42

Image



Western blot analysis of extracts from JK, HL-60 and Raji cells using Rex1(ZFP42) Antibody.

Usage

For Research Use Only. Not for use in diagnostic or therapeutic procedures.