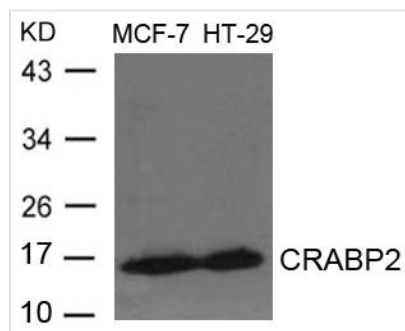




CRABP2 Antibody

Product Code	CSB-PA634376
Storage	Upon receipt, store at -20°C or -80°C. Avoid repeated freeze.
Uniprot No.	P29373
Immunogen	Peptide sequence around aa.87~91(K-W-E-S-E) derived from Human CRABP2
Raised In	Rabbit
Species Reactivity	Human,Rat
Specificity	The antibody detects endogenous levels of total CRABP2 protein.
Tested Applications	ELISA,WB;WB:1:500-1:1000
Form	Supplied at 1.0mg/mL in phosphate buffered saline (without Mg ²⁺ and Ca ²⁺), pH 7.4, 150mM NaCl, 0.02% sodium azide and 50% glycerol.
Purification Method	Antibodies were produced by immunizing rabbits with synthetic peptide and KLH conjugates. Antibodies were purified by affinity-chromatography using epitope-specific peptide.
Clonality	Polyclonal
Alias	RBP6; CRABP-II;
Product Type	Polyclonal Antibody
Immunogen Species	Homo sapiens (Human)
Target Names	CRABP2

Image



Western blot analysis of extracts from MCF-7 and HT-29 cells using CRABP2 Antibody.

Usage

For Research Use Only. Not for use in diagnostic or therapeutic procedures.