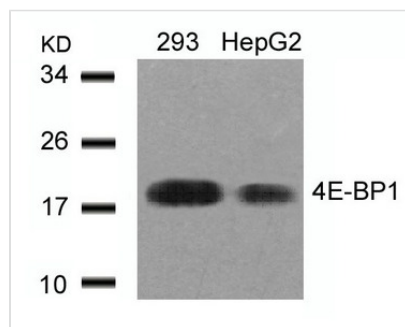




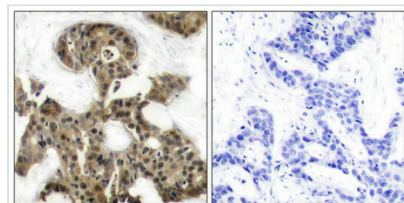
EIF4EBP1 (Ab-45) Antibody

Product Code	CSB-PA174078
Storage	Upon receipt, store at -20°C or -80°C. Avoid repeated freeze.
Uniprot No.	Q13541
Immunogen	Peptide sequence around aa.43~47 (S-T-T-P-G) derived from Human 4E-BP1.
Raised In	Rabbit
Species Reactivity	Human,Mouse,Rat
Specificity	The antibody detects endogenous level of total 4E-BP1 protein.
Tested Applications	ELISA,WB,IHC,IF;WB:1:500-1:1000,IHC:1:50-1:200,IF:1:100-1:200
Form	Supplied at 1.0mg/mL in phosphate buffered saline (without Mg ²⁺ and Ca ²⁺), pH 7.4, 150mM NaCl, 0.02% sodium azide and 50% glycerol.
Purification Method	Antibodies were produced by immunizing rabbits with synthetic peptide and KLH conjugates. Antibodies were purified by affinity-chromatography using epitope-specific peptide.
Clonality	Polyclonal
Alias	EIF4EBP1; PHAS-1;
Product Type	Polyclonal Antibody
Immunogen Species	Homo sapiens (Human)
Target Names	EIF4EBP1

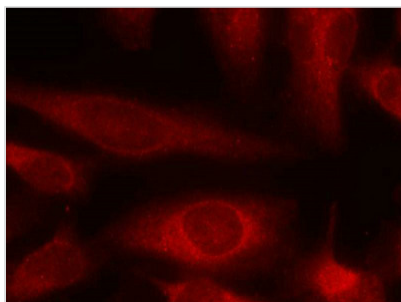
Image



Western blot analysis of extracts from 293 and HepG2 cells using 4E-BP1(Ab-45) Antibody.



Immunohistochemical analysis of paraffin-embedded human breast carcinoma tissue using 4E-BP1(Ab-45) Antibody(left) or the same antibody preincubated with blocking peptide(right).



Immunofluorescence staining of methanol-fixed Hela cells using 4E-BP1(Ab-45) Antibody.