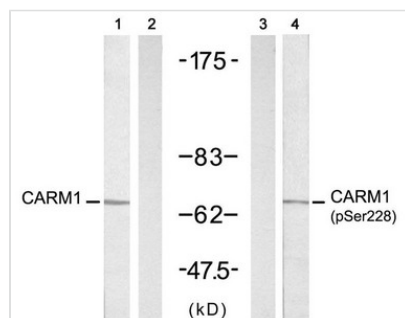




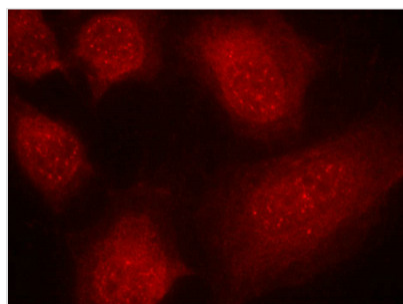
CARM1 (Ab-228) Antibody

Product Code	CSB-PA021890
Storage	Upon receipt, store at -20°C or -80°C. Avoid repeated freeze.
Uniprot No.	Q86X55
Immunogen	Peptide sequence around aa.226~230 (V-K-S-N-N) derived from CARM1
Raised In	Rabbit
Species Reactivity	Human,Mouse,Rat
Specificity	The antibody detects endogenous levels of total CARM1 protein.
Tested Applications	ELISA,WB,IF;WB:1:500-1:1000,IF:1:100-1:200
Form	Supplied at 1.0mg/mL in phosphate buffered saline (without Mg ²⁺ and Ca ²⁺), pH 7.4, 150mM NaCl, 0.02% sodium azide and 50% glycerol.
Purification Method	Antibodies were produced by immunizing rabbits with synthetic peptide and KLH conjugates. Antibodies were purified by affinity-chromatography using epitope-specific peptide.
Clonality	Polyclonal
Alias	PRMT4
Product Type	Polyclonal Antibody
Immunogen Species	Homo sapiens (Human)
Target Names	CARM1

Image



Western blot analysis of extracts from A431 cells untreated or treated with EGF(200ng/ml, 5min), using CARM1(Ab-228) antibody(, Line 1 and 2) and CARM1(Phospho-Ser228) antibody(, Line 3 and 4).



Immunofluorescence staining of methanol-fixed HeLa cells using CARM1(Ab-228) antibody.