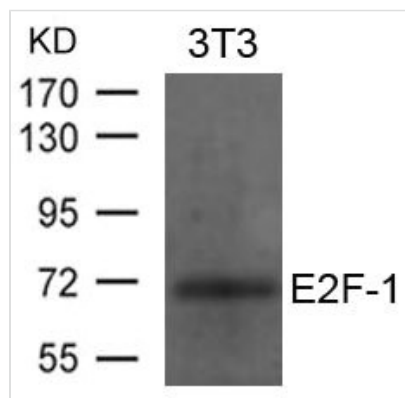




# E2F1 Antibody

|                            |                                                                                                                                                                               |
|----------------------------|-------------------------------------------------------------------------------------------------------------------------------------------------------------------------------|
| <b>Product Code</b>        | CSB-PA922981                                                                                                                                                                  |
| <b>Storage</b>             | Upon receipt, store at -20°C or -80°C. Avoid repeated freeze.                                                                                                                 |
| <b>Uniprot No.</b>         | Q01094                                                                                                                                                                        |
| <b>Immunogen</b>           | Peptide sequence around aa.430~434(G-D-L-T-P) derived from Human E2F-1                                                                                                        |
| <b>Raised In</b>           | Rabbit                                                                                                                                                                        |
| <b>Species Reactivity</b>  | Human,Mouse                                                                                                                                                                   |
| <b>Specificity</b>         | The antibody detects endogenous levels of total E2F-1 protein.                                                                                                                |
| <b>Tested Applications</b> | ELISA,WB;WB:1:500-1:1000                                                                                                                                                      |
| <b>Form</b>                | Supplied at 1.0mg/mL in phosphate buffered saline (without Mg <sup>2+</sup> and Ca <sup>2+</sup> ), pH 7.4, 150mM NaCl, 0.02% sodium azide and 50% glycerol.                  |
| <b>Purification Method</b> | Antibodies were produced by immunizing rabbits with synthetic peptide and KLH conjugates. Antibodies were purified by affinity-chromatography using epitope-specific peptide. |
| <b>Clonality</b>           | Polyclonal                                                                                                                                                                    |
| <b>Alias</b>               | RBP3; E2F-1; RBAP1; RBBP3;                                                                                                                                                    |
| <b>Product Type</b>        | Polyclonal Antibody                                                                                                                                                           |
| <b>Immunogen Species</b>   | Homo sapiens (Human)                                                                                                                                                          |
| <b>Target Names</b>        | E2F1                                                                                                                                                                          |

## Image



Western blot analysis of extracts from 3T3 cells using E2F-1 Antibody.