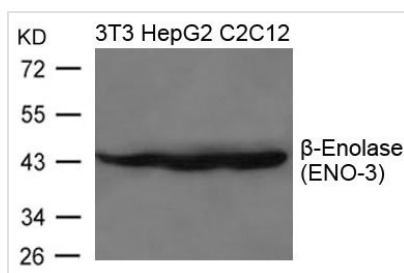




ENO3 Antibody

Product Code	CSB-PA264590
Storage	Upon receipt, store at -20°C or -80°C. Avoid repeated freeze.
Uniprot No.	P13929
Immunogen	Peptide sequence around aa.49~53(L-R-D-G-D) derived from Human b-Enolase(ENO-3).
Raised In	Rabbit
Species Reactivity	Human,Mouse,Rat
Specificity	The antibody detects endogenous level of total b-Enolase(ENO-3) protein.
Tested Applications	ELISA,WB;WB:1:500-1:1000
Form	Supplied at 1.0mg/mL in phosphate buffered saline (without Mg ²⁺ and Ca ²⁺), pH 7.4, 150mM NaCl, 0.02% sodium azide and 50% glycerol.
Purification Method	Antibodies were produced by immunizing rabbits with synthetic peptide and KLH conjugates. Antibodies were purified by affinity-chromatography using epitope-specific peptide.
Clonality	Polyclonal
Alias	MSE; GSD13;
Product Type	Polyclonal Antibody
Immunogen Species	Homo sapiens (Human)
Target Names	ENO3

Image



Western blot analysis of extracts from 3T3, HepG2 and C2C12 cells using b-Enolase(ENO-3) Antibody.

Usage

For Research Use Only. Not for use in diagnostic or therapeutic procedures.