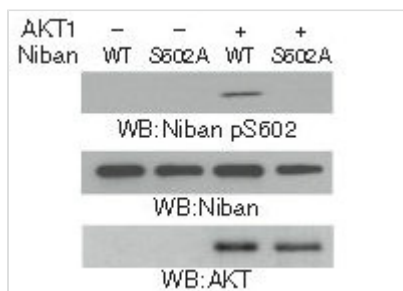




Phospho-FAM129A (Ser602) Antibody

Product Code	CSB-PA589975
Storage	Upon receipt, store at -20°C or -80°C. Avoid repeated freeze.
Uniprot No.	Q9BZQ8
Immunogen	Peptide sequence around phosphorylation site of serine 602 (R-A-S(p)-A-I) derived from Human Niban.
Raised In	Rabbit
Species Reactivity	Human
Specificity	The antibody detects endogenous level of Niban only when phosphorylated at serine 602.
Tested Applications	ELISA, WB; WB: 1:500-1:1000
Form	Supplied at 1.0mg/mL in phosphate buffered saline (without Mg ²⁺ and Ca ²⁺), pH 7.4, 150mM NaCl, 0.02% sodium azide and 50% glycerol.
Purification Method	Antibodies were produced by immunizing rabbits with synthetic phosphopeptide and KLH conjugates. Antibodies were purified by affinity-chromatography using epitope-specific phosphopeptide. Non-phospho specific antibodies were removed by chromatography
Clonality	Polyclonal
Alias	FAM129A
Product Type	Polyclonal Antibody
Immunogen Species	Homo sapiens (Human)
Target Names	FAM129A

Image



Western blot analysis in vitro kinase assays were performed by mixing purified bacterially expressed WT His-Niban or the His-Niban S602A with or without purified active AKT1 using Niban (Phospho-Ser602) Antibody.

Product Modify	Phospho-Ser602
Usage	For Research Use Only. Not for use in diagnostic or therapeutic procedures.