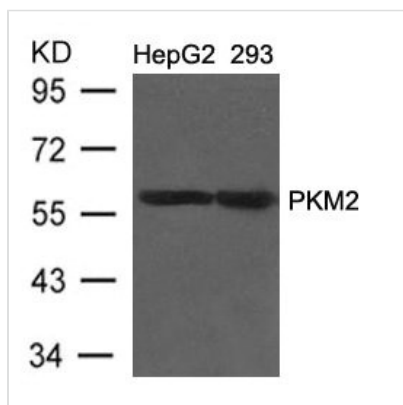




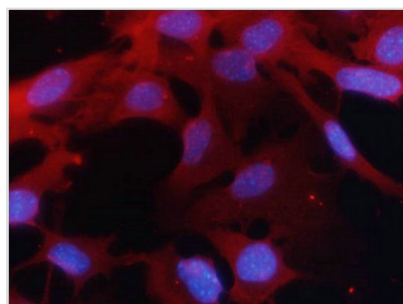
PKM Antibody

Product Code	CSB-PA984745
Storage	Upon receipt, store at -20°C or -80°C. Avoid repeated freeze.
Uniprot No.	P14618-1
Immunogen	Peptide sequence around aa.405~409(T-S-D-P-T) derived from Human PKM2.
Raised In	Rabbit
Species Reactivity	Human
Specificity	The antibody detects endogenous levels of total PKM2 protein.
Tested Applications	ELISA,WB,IF;WB:1:500-1:1000,IF:1:100-1:200
Form	Supplied at 1.0mg/mL in phosphate buffered saline (without Mg ²⁺ and Ca ²⁺), pH 7.4, 150mM NaCl, 0.02% sodium azide and 50% glycerol.
Purification Method	Antibodies were produced by immunizing rabbits with synthetic peptide and KLH conjugates. Antibodies were purified by affinity-chromatography using epitope-specific peptide.
Clonality	Polyclonal
Alias	PKM; PK3; OIP3; PK2;
Product Type	Polyclonal Antibody
Immunogen Species	Homo sapiens (Human)
Target Names	PKM

Image



Western blot analysis of extracts from HepG2 and 293 cells using PKM2 Antibody.



Immunofluorescence staining of methanol-fixed MEF cells using PKM2 Antibody.



Usage

For Research Use Only. Not for use in diagnostic or therapeutic procedures.