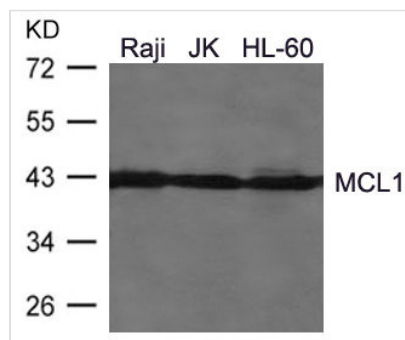




MCL1 Antibody

| | |
|----------------------------|---|
| Product Code | CSB-PA274877 |
| Storage | Upon receipt, store at -20°C or -80°C. Avoid repeated freeze. |
| Uniprot No. | Q07820 |
| Immunogen | Peptide sequence around aa.148~152(N-N-T-S-T) derived from Human MCL1. |
| Raised In | Rabbit |
| Species Reactivity | Human |
| Specificity | The antibody detects endogenous level of total MCL1 protein. |
| Tested Applications | ELISA,WB;WB:1:500-1:1000 |
| Form | Supplied at 1.0mg/mL in phosphate buffered saline (without Mg ²⁺ and Ca ²⁺), pH 7.4, 150mM NaCl, 0.02% sodium azide and 50% glycerol. |
| Purification Method | Antibodies were produced by immunizing rabbits with synthetic peptide and KLH conjugates. Antibodies were purified by affinity-chromatography using epitope-specific peptide. |
| Clonality | Polyclonal |
| Alias | TM; EAT; MCL1L; BCL2L3; mcl1/EAT |
| Product Type | Polyclonal Antibody |
| Immunogen Species | Homo sapiens (Human) |
| Target Names | MCL1 |

Image



Western blot analysis of extracts from Raji, JK, HL-60 cells using MCL1 Antibody.

Usage

For Research Use Only. Not for use in diagnostic or therapeutic procedures.