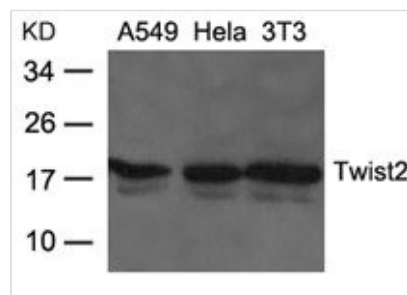




TWIST2 Antibody

Product Code	CSB-PA555268
Storage	Upon receipt, store at -20°C or -80°C. Avoid repeated freeze.
Uniprot No.	Q8WVJ9
Immunogen	Peptide sequence around aa.26~30(P-K-R-F-G) derived from Human Twist2.
Raised In	Rabbit
Species Reactivity	Human,Mouse,Rat
Specificity	The antibody detects endogenous level of total Twist2 protein.
Tested Applications	ELISA,WB;WB:1:500-1:1000
Form	Supplied at 1.0mg/mL in phosphate buffered saline (without Mg ²⁺ and Ca ²⁺), pH 7.4, 150mM NaCl, 0.02% sodium azide and 50% glycerol.
Purification Method	Antibodies were produced by immunizing rabbits with synthetic peptide and KLH conjugates. Antibodies were purified by affinity-chromatography using epitope-specific peptide.
Clonality	Polyclonal
Alias	DERMO1; MGC117334; bHLHa39
Product Type	Polyclonal Antibody
Immunogen Species	Homo sapiens (Human)
Target Names	TWIST2

Image



Western blot analysis of extracts from A549, HeLa and 3T3 cells using Twist2 Antibody.

Usage

For Research Use Only. Not for use in diagnostic or therapeutic procedures.