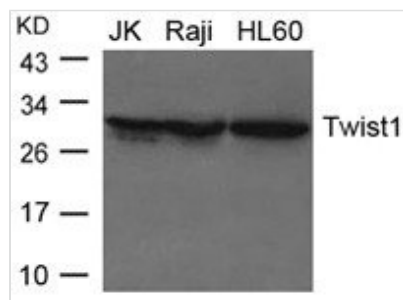




TWIST1 Antibody

Product Code	CSB-PA944996
Storage	Upon receipt, store at -20°C or -80°C. Avoid repeated freeze.
Uniprot No.	Q15672
Immunogen	Peptide sequence around aa.18~22(S-N-S-E-E) derived from Human Twist1
Raised In	Rabbit
Species Reactivity	Human,Mouse,Rat
Specificity	The antibody detects endogenous levels of total Twist1 protein.
Tested Applications	ELISA,WB,IHC;WB:1:500-1:1000,IHC:1:50-1:200
Form	Supplied at 1.0mg/mL in phosphate buffered saline (without Mg ²⁺ and Ca ²⁺), pH 7.4, 150mM NaCl, 0.02% sodium azide and 50% glycerol.
Purification Method	Antibodies were produced by immunizing rabbits with synthetic peptide and KLH conjugates. Antibodies were purified by affinity-chromatography using epitope-specific peptide.
Clonality	Polyclonal
Alias	SCS; ACS3; CRS1; BPES2; BPES3
Product Type	Polyclonal Antibody
Immunogen Species	Homo sapiens (Human)
Target Names	TWIST1

Image



Western blot analysis of extracts from JK, Raji and HL-60 cells using Twist1 Antibody.



Twist1 Antibody staining Twist in Mouse pancreatic cancer tissue sections by Immunohistochemistry