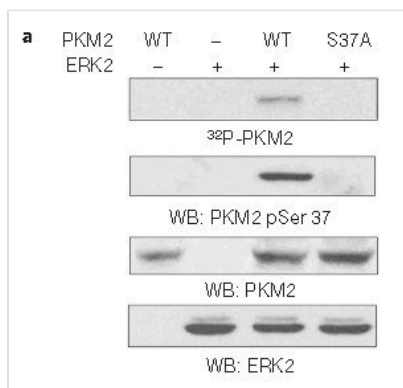




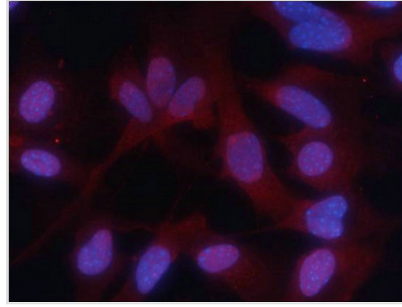
# Phospho-PKM (Ser37) Antibody

<b>Product Code</b>	CSB-PA779576
<b>Storage</b>	Upon receipt, store at -20°C or -80°C. Avoid repeated freeze.
<b>Uniprot No.</b>	Swiss-Prot#: P14618 NCBI Protein#: NP_872270.1
<b>Immunogen</b>	Peptide sequence around phosphorylation site of serine 37(I-D-S(p)-P-P) derived from Human PKM2.
<b>Raised In</b>	Rabbit
<b>Species Reactivity</b>	Human
<b>Specificity</b>	The antibody detects endogenous level of PKM2 only when phosphorylated at serine 37.
<b>Tested Applications</b>	ELISA,WB,IF;WB:1:500-1:1000,IF:1:100-1:200
<b>Form</b>	Supplied at 1.0mg/mL in phosphate buffered saline (without Mg <sup>2+</sup> and Ca <sup>2+</sup> ), pH 7.4, 150mM NaCl, 0.02% sodium azide and 50% glycerol.
<b>Purification Method</b>	Antibodies were produced by immunizing rabbits with synthetic phosphopeptide and KLH conjugates. Antibodies were purified by affinity-chromatography using epitope-specific phosphopeptide. Non-phospho specific antibodies were removed by chromatography usi
<b>Clonality</b>	Polyclonal
<b>Alias</b>	Pyruvate kinase PKM (Cytosolic thyroid hormone-binding protein) (CTHBP) (Opa-interacting protein 3) (OIP-3) (Pyruvate kinase 2/3) (Pyruvate kinase muscle isozyme) (Thyroid hormone-binding protein 1) (THBP1) (Tumor M2-PK) (p58), PKM, OIP3 PK2 PK3 PKM2
<b>Immunogen Species</b>	Homo sapiens (Human)
<b>Target Names</b>	PKM

## Image



Western blot analysis of in vitro kinase assays carried out with purified active ERK2, wild-type (WT) PKM2 and PKM2 S37A mutant using PKM2(phospho-Ser37)Antibody.



Immunofluorescence staining of methanol-fixed MEF cells using PKM2 (phospho-Ser37) Antibody.

---

**Product Modify**

Phospho-Ser37

---

**Usage**

For Research Use Only. Not for use in diagnostic or therapeutic procedures.