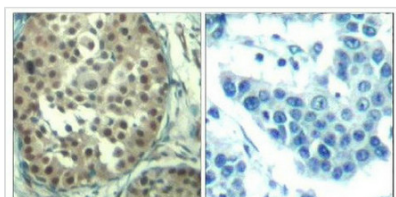




CCNE1 (Ab-395) Antibody

Product Code	CSB-PA986404
Storage	Upon receipt, store at -20°C or -80°C. Avoid repeated freeze.
Uniprot No.	P24864
Immunogen	The antiserum was produced against synthesized non-phosphopeptide derived from Human Cyclin E1 around the phosphorylation site of threonine 395 (L-L-TP-P-P).
Raised In	Rabbit
Species Reactivity	Human
Specificity	Cyclin E1 (Ab-395) Antibody detects endogenous levels of total Cyclin E1 protein.
Tested Applications	ELISA,IHC;IHC:1:50-1:100
Form	Rabbit IgG in phosphate buffered saline (without Mg ²⁺ and Ca ²⁺), pH 7.4, 150mM NaCl, 0.02% sodium azide and 50% glycerol.
Purification Method	The antibody was affinity-purified from rabbit antiserum by affinity-chromatography using epitope-specific immunogen .
Clonality	Polyclonal
Alias	CCNE, CCNE1
Product Type	Polyclonal Antibody
Immunogen Species	Homo sapiens (Human)
Target Names	CCNE1

Image



Peptide - +
Immunohistochemical analysis of paraffin-embedded human breast carcinoma tissue using Cyclin E1 (Ab-395) Antibody (#21541).

Immunohistochemical analysis of paraffin-embedded human breast carcinoma tissue using Cyclin E1 (Ab-395) Antibody.

Usage

For Research Use Only. Not for use in diagnostic or therapeutic procedures.