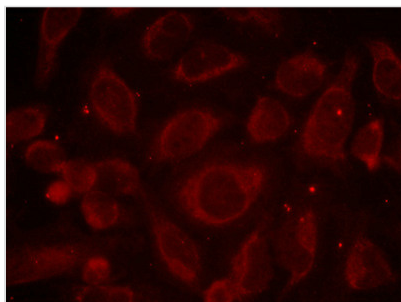




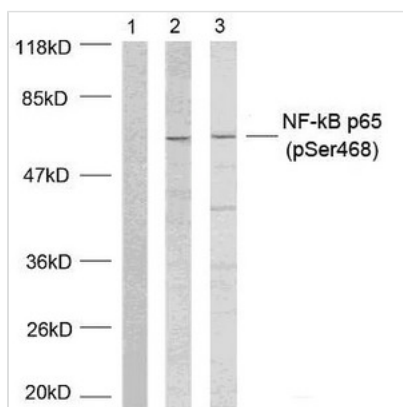
# Phospho-RELA (Ser468) Antibody

<b>Product Code</b>	CSB-PA285452
<b>Storage</b>	Upon receipt, store at -20°C or -80°C. Avoid repeated freeze.
<b>Uniprot No.</b>	Q04206
<b>Raised In</b>	Rabbit
<b>Species Reactivity</b>	Human, Mouse, Rat
<b>Tested Applications</b>	ELISA, WB, IF; WB:1:500-1:1000, IF:1:100-1:200
<b>Form</b>	Liquid
<b>Clonality</b>	Polyclonal
<b>Alias</b>	p65, NFKB3,
<b>Immunogen Species</b>	Homo sapiens (Human)
<b>Target Names</b>	RELA

## Image



Immunofluorescence staining of methanol-fixed HeLa cells using NF- $\kappa$ B p65 (phospho-Ser468) antibody.



Western blot analysis of extracts using NF- $\kappa$ B p65 (phospho-Ser468) antibody.

<b>Product Modify</b>	Phospho-Ser468
<b>Usage</b>	For Research Use Only. Not for use in diagnostic or therapeutic procedures.