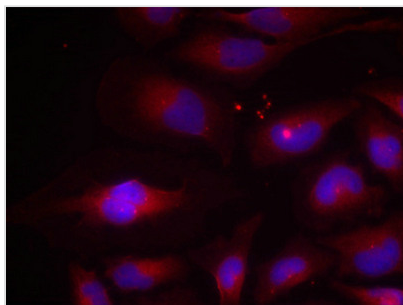




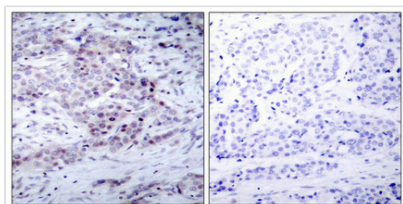
# Phospho-NFKB2 (Ser870) Antibody

<b>Product Code</b>	CSB-PA038994
<b>Storage</b>	Upon receipt, store at -20°C or -80°C. Avoid repeated freeze.
<b>Uniprot No.</b>	Q00653
<b>Immunogen</b>	Peptide sequence around phosphorylation site of serine 870(Y-G-S(p)-Q-S) derived from Human NFκB-p100.
<b>Raised In</b>	Rabbit
<b>Species Reactivity</b>	Human,Mouse,Rat
<b>Specificity</b>	The antibody detects endogenous level of NFκB-p100 only when phosphorylated at serine 870.
<b>Tested Applications</b>	ELISA,WB,IHC,IF;WB:1:500-1:1000,IHC:1:50-1:100,IF:1:100-1:200
<b>Form</b>	Supplied at 1.0mg/mL in phosphate buffered saline (without Mg <sup>2+</sup> and Ca <sup>2+</sup> ), pH 7.4, 150mM NaCl, 0.02% sodium azide and 50% glycerol.
<b>Purification Method</b>	Antibodies were produced by immunizing rabbits with synthetic phosphopeptide and KLH conjugates. Antibodies were purified by affinity-chromatography using epitope-specific phosphopeptide. Non-phospho specific antibodies were removed by chromatography
<b>Clonality</b>	Polyclonal
<b>Alias</b>	p52; p105; H2TF1; LYT10; NF-κB2
<b>Product Type</b>	Polyclonal Antibody
<b>Immunogen Species</b>	Homo sapiens (Human)
<b>Target Names</b>	NFKB2

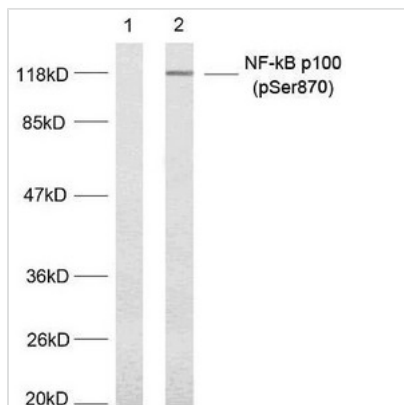
## Image



Immunofluorescence staining of methanol-fixed HeLa cells using NF-κB p100(phospho-Ser870) antibody.



Immunohistochemical analysis of paraffin-embedded human breast carcinoma tissue using NF-κB p100(phospho-Ser870) antibody.



Western blot analysis of extract from MDA-MB-435 cells untreated or treated with TNF-alpha; (20ng/ml, 5min) using NF-κB p100(phospho-Ser870) antibody.

**Product Modify**

Phospho-Ser870

**Usage**

For Research Use Only. Not for use in diagnostic or therapeutic procedures.