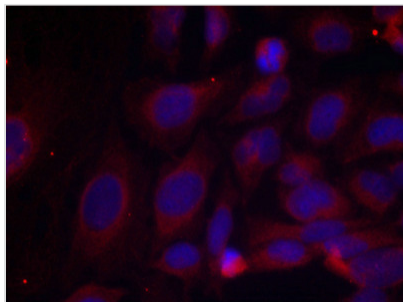




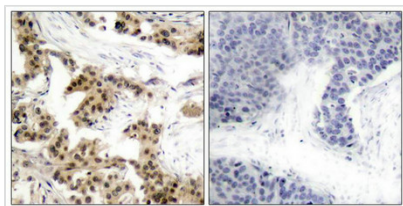
# Phospho-NFkB1 (Ser893) Antibody

<b>Product Code</b>	CSB-PA258273
<b>Storage</b>	Upon receipt, store at -20°C or -80°C. Avoid repeated freeze.
<b>Uniprot No.</b>	P19838
<b>Immunogen</b>	Peptide sequence around aa.891~895 (A-S-S-P-V) derived from Human NFκB-p105.
<b>Raised In</b>	Rabbit
<b>Species Reactivity</b>	Human
<b>Specificity</b>	The antibody detects endogenous level of total NFκB-p105 protein.
<b>Tested Applications</b>	ELISA,IHC,IF;IHC:1:50-1:100,IF:1:100-1:200
<b>Form</b>	Supplied at 1.0mg/mL in phosphate buffered saline (without Mg <sup>2+</sup> and Ca <sup>2+</sup> ), pH 7.4, 150mM NaCl, 0.02% sodium azide and 50% glycerol.
<b>Purification Method</b>	Antibodies were produced by immunizing rabbits with synthetic peptide and KLH conjugates. Antibodies were purified by affinity-chromatography using epitope-specific peptide.
<b>Clonality</b>	Polyclonal
<b>Alias</b>	KBF1; NF-κB1; NFκappaB
<b>Product Type</b>	Polyclonal Antibody
<b>Immunogen Species</b>	Homo sapiens (Human)
<b>Target Names</b>	NFKB1

## Image



Immunofluorescence staining of methanol-fixed HeLa cells using NF-kappa;B p105 (phospho-Ser893) antibody.



Immunohistochemical analysis of paraffin-embedded human breast carcinoma tissue using NF-κB p105 (phospho-Ser893) antibody.

**Product Modify** Phospho-Ser893