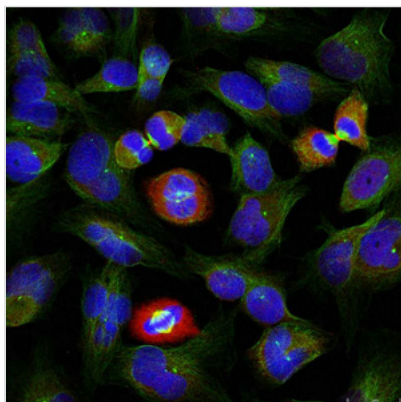




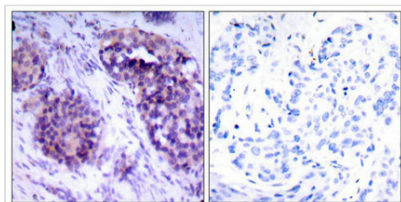
# Phospho-BCL2L1 (Ser62) Antibody

<b>Product Code</b>	CSB-PA786016
<b>Storage</b>	Upon receipt, store at -20°C or -80°C. Avoid repeated freeze.
<b>Uniprot No.</b>	Q07817
<b>Raised In</b>	Rabbit
<b>Species Reactivity</b>	Human, Mouse, Rat
<b>Tested Applications</b>	ELISA, WB, IHC, IF; WB:1:500-1:1000, IHC:1:50-1:100, IF:1:100-1:200
<b>Form</b>	Liquid
<b>Clonality</b>	Polyclonal
<b>Alias</b>	BCLX, BCL2L, BCLXL, BCLXS,
<b>Immunogen Species</b>	Homo sapiens (Human)
<b>Target Names</b>	BCL2L1

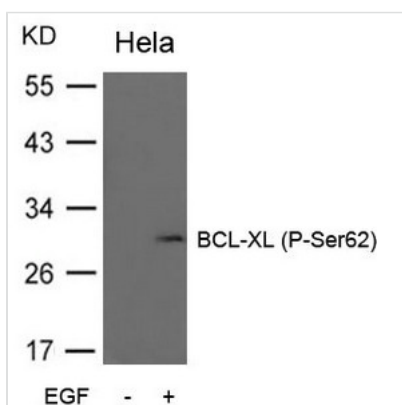
## Image



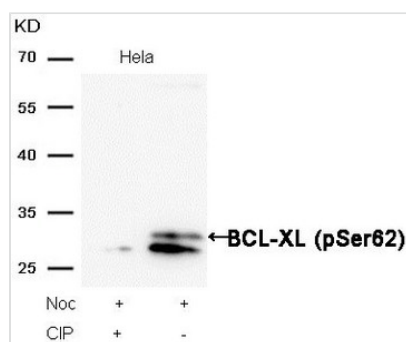
Immunofluorescence staining of methanol-fixed HeLa cells using BCL-XL (phospho-Ser62) antibody.



Immunohistochemical analysis of paraffin-embedded human breast carcinoma tissue using BCL-XL (phospho-Ser62) antibody.



Western blot analysis of extracts from HeLa cells untreated or treated with EGF using BCL-XL (Phospho-Ser62) Antibody.



Western blot analysis of extracts from HeLa cells, treated with Noc or calf intestinal phosphatase (CIP), using BCL-XL (Phospho-Ser62) Antibody.

**Product Modify**

**Phospho-Ser62**