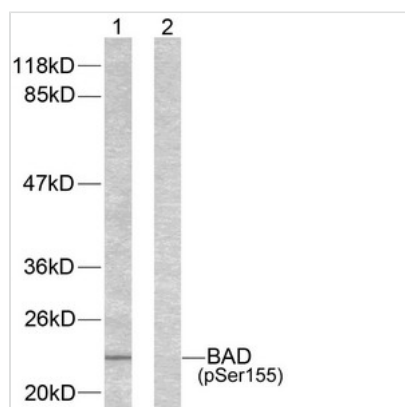




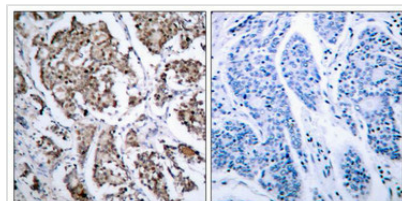
Phospho-Bad (Ser155) Antibody

Product Code	CSB-PA193795
Storage	Upon receipt, store at -20°C or -80°C. Avoid repeated freeze.
Uniprot No.	Q61337
Immunogen	Peptide sequence around phosphorylation site of serine 155(R-M-S(p)-D-E) derived from Human BAD.
Raised In	Rabbit
Species Reactivity	Human,Mouse,Rat
Specificity	The antibody detects endogenous level of BAD only when phosphorylated at serine 155.
Tested Applications	ELISA,WB,IHC;WB:1:500-1:1000,IHC:1:50-1:100
Form	Supplied at 1.0mg/mL in phosphate buffered saline (without Mg ²⁺ and Ca ²⁺), pH 7.4, 150mM NaCl, 0.02% sodium azide and 50% glycerol.
Purification Method	Antibodies were produced by immunizing rabbits with synthetic phosphopeptide and KLH conjugates. Antibodies were purified by affinity-chromatography using epitope-specific phosphopeptide. Non-phospho specific antibodies were removed by chromatography usi
Clonality	Polyclonal
Alias	Bbc2; AI325008
Product Type	Polyclonal Antibody
Immunogen Species	Mus musculus (Mouse)
Target Names	Bad

Image



Western blot analysis of extracts from 293 cells using BAD (phospho-Ser155) antibody.



Immunohistochemical analysis of paraffin-embedded human breast carcinoma tissue using BAD (phospho-Ser155) antibody.



Product Modify

Phospho-Ser155

Usage

For Research Use Only. Not for use in diagnostic or therapeutic procedures.