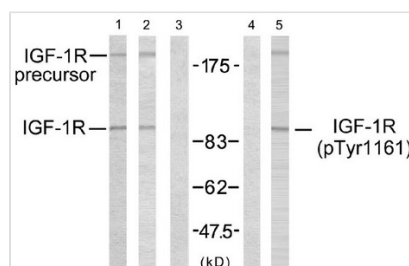




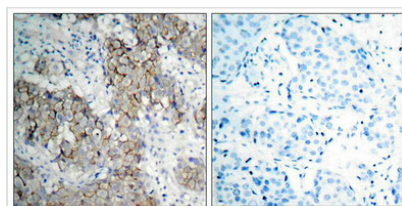
# Phospho-IGF1R (Tyr1161) Antibody

<b>Product Code</b>	CSB-PA120059
<b>Storage</b>	Upon receipt, store at -20°C or -80°C. Avoid repeated freeze.
<b>Uniprot No.</b>	P08069
<b>Immunogen</b>	Peptide sequence around phosphorylation site of tyrosine 1161(D-I-Y(p)-E-T)derived from Human IGF-1R.
<b>Raised In</b>	Rabbit
<b>Species Reactivity</b>	Human,Mouse,Rat
<b>Specificity</b>	The antibody detects endogenous level of IGF-1R only when phosphorylated at tyrosine 1161.
<b>Tested Applications</b>	ELISA,WB,IHC,IF;WB:1:500-1:1000,IHC:1:50-1:100,IF:1:100-1:200
<b>Form</b>	Supplied at 1.0mg/mL in phosphate buffered saline (without Mg <sup>2+</sup> and Ca <sup>2+</sup> ), pH 7.4, 150mM NaCl, 0.02% sodium azide and 50% glycerol.
<b>Purification Method</b>	Antibodies were produced by immunizing rabbits with synthetic phosphopeptide and KLH conjugates. Antibodies were purified by affinity-chromatography using epitope-specific phosphopeptide. Non-phospho specific antibodies were removed by chromatography usi
<b>Clonality</b>	Polyclonal
<b>Alias</b>	IGFR; CD221; IGFIK; JTK13
<b>Product Type</b>	Polyclonal Antibody
<b>Immunogen Species</b>	Homo sapiens (Human)
<b>Target Names</b>	IGF1R

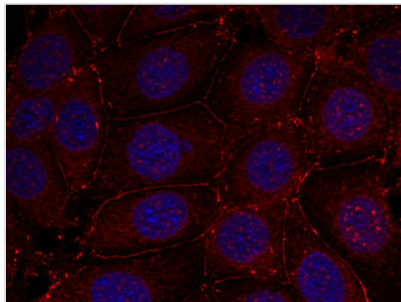
## Image



Western blot analysis using IGF-1R (Ab-1161) antibody (Line 1, 2 and 3) and IGF-1R (phospho-Tyr1161) antibody (Line 4 and 5).



Immunohistochemical analysis of paraffin-embedded human breast carcinoma tissue using IGF-1R (phospho-Tyr1161) antibody.



Immunofluorescence staining of methanol-fixed MCF7 cells using IGF-1R (phospho-Tyr1161) antibody.

Product Modify

Phospho-Tyr1161