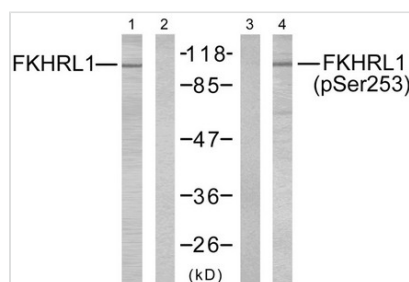




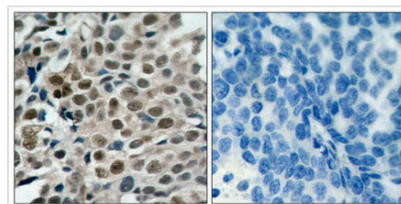
Phospho-FOXO3 (Ser253) Antibody

Product Code	CSB-PA030478
Storage	Upon receipt, store at -20°C or -80°C. Avoid repeated freeze.
Uniprot No.	O43524
Immunogen	Peptide sequence around phosphorylation site of serine 253(A-V-S(p)-M-D) derived from Human FKHRL1.
Raised In	Rabbit
Species Reactivity	Human,Mouse,Rat
Specificity	The antibody detects endogenous level of FKHRL1 only when phosphorylated at serine 253.
Tested Applications	ELISA,WB,IHC,IF;WB:1:500-1:1000,IHC:1:50-1:100,IF:1:100-1:200
Form	Supplied at 1.0mg/mL in phosphate buffered saline (without Mg ²⁺ and Ca ²⁺), pH 7.4, 150mM NaCl, 0.02% sodium azide and 50% glycerol.
Purification Method	Antibodies were produced by immunizing rabbits with synthetic phosphopeptide and KLH conjugates. Antibodies were purified by affinity-chromatography using epitope-specific phosphopeptide. Non-phospho specific antibodies were removed by chromatography usi
Clonality	Polyclonal
Alias	FOXO2; AF6q21; FKHRL1; FOXO3A; FKHRL1P2
Product Type	Polyclonal Antibody
Immunogen Species	Homo sapiens (Human)
Target Names	FOXO3

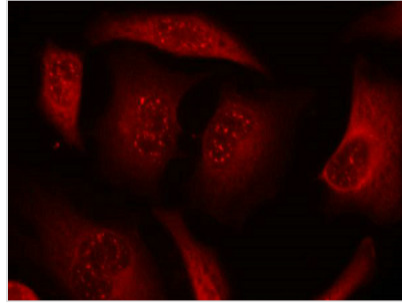
Image



Western blot analysis of extracts from NIH/3T3 cells using FKHRL1 (Ab-253) antibody (Lane 1 and 2) and FKHRL1 (phospho-Ser253) antibody (Lane 3 and 4).



Immunohistochemical analysis of paraffin-embedded human breast carcinoma tissue using FKHRL1 (phospho-Ser253) antibody.



Immunofluorescence staining of methanol-fixed HeLa cells using FKHRL1 (phospho-Ser253) antibody.

Product Modify

Phospho-Ser253

Usage

For Research Use Only. Not for use in diagnostic or therapeutic procedures.