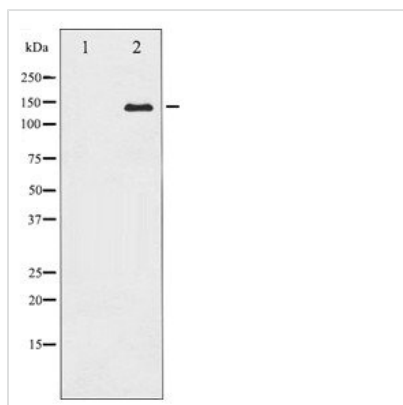




CASR Antibody

Product Code	CSB-PA443839
Storage	Upon receipt, store at -20°C or -80°C. Avoid repeated freeze.
Uniprot No.	P41180
Immunogen	A synthesized peptide derived from Human Calcium Sensing Receptor
Raised In	Rabbit
Species Reactivity	Human,Mouse,Rat
Specificity	Calcium Sensing Receptor Antibody detects endogenous levels of total Calcium Sensing Receptor
Tested Applications	ELISA,WB,IHC;WB:1:500-1:2000,IHC:1:50-1:200
Form	Rabbit IgG in phosphate buffered saline , pH 7.4, 150mM NaCl, 0.02% sodium azide and 50% glycerol. Store at -20°C.Stable for 12 months from date of receipt.
Purification Method	Antigen Affinity Purified
Clonality	Polyclonal
Alias	CASR, CaSR, Extracellular calcium-sensing receptor precursor, GPRC2A, PCAR1, Parathyroid Cell calcium-sensing receptor
Product Type	Polyclonal Antibody
Immunogen Species	Homo sapiens (Human)
Target Names	CASR

Image



Western blot analysis of Calcium Sensing Receptor expression in LOVO whole cell lysates, The lane on the left is treated with the antigen-specific peptide.

Usage

For Research Use Only. Not for use in diagnostic or therapeutic procedures.