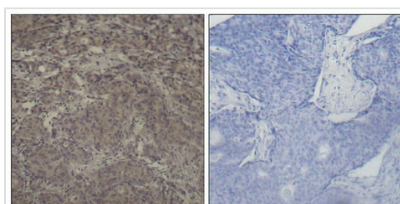




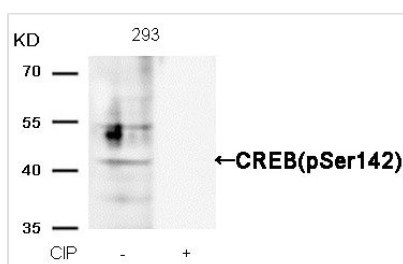
Phospho-CREB1 (Ser142) Antibody

Product Code	CSB-PA275971
Storage	Upon receipt, store at -20°C or -80°C. Avoid repeated freeze.
Uniprot No.	P16220
Immunogen	Peptide sequence around phosphorylation site of serine 142(D-L-S(p)-S-D) derived from Human CREB.
Raised In	Rabbit
Species Reactivity	Human,Mouse,Rat
Specificity	The antibody detects endogenous level of CREB only when phosphorylated at serine142.
Tested Applications	ELISA,WB,IHC;WB:1:500-1:1000,IHC:1:50-1:100
Form	Supplied at 1.0mg/mL in phosphate buffered saline (without Mg ²⁺ and Ca ²⁺), pH 7.4, 150mM NaCl, 0.02% sodium azide and 50% glycerol.
Purification Method	Antibodies were produced by immunizing rabbits with synthetic phosphopeptide and KLH conjugates. Antibodies were purified by affinity-chromatography using epitope-specific phosphopeptide. Non-phospho specific antibodies were removed by chromatography usi
Clonality	Polyclonal
Alias	CREB
Product Type	Polyclonal Antibody
Immunogen Species	Homo sapiens (Human)
Target Names	CREB1

Image



Immunohistochemical analysis of paraffin-embedded human breast carcinoma tissue using CREB (Phospho-Ser142) Antibody.



Western blot analysis of extracts from 293 cells, treated with calf intestinal phosphatase (CIP), using CREB(Phospho-Ser142) Antibody.

Product Modify	Phospho-Ser142
Usage	For Research Use Only. Not for use in diagnostic or therapeutic procedures.