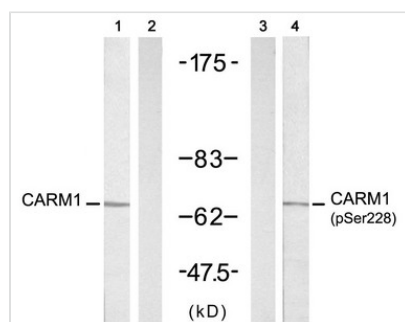




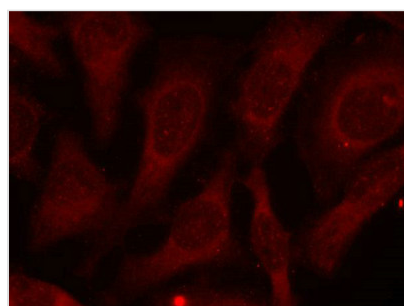
Phospho-CARM1 (Ser228) Antibody

Product Code	CSB-PA447549
Storage	Upon receipt, store at -20°C or -80°C. Avoid repeated freeze.
Uniprot No.	A6NN38
Immunogen	Peptide sequence around phosphorylation site of serine 228(V-K-S(p)-N-N) derived from Human CARM1.
Raised In	Rabbit
Species Reactivity	Human,Mouse,Rat
Specificity	The antibody detects endogenous level of CARM1 only when phosphorylated at serine228.
Tested Applications	ELISA,WB,IF;WB:1:500-1:1000,IF:1:100-1:200
Form	Supplied at 1.0mg/mL in phosphate buffered saline (without Mg ²⁺ and Ca ²⁺), pH 7.4, 150mM NaCl, 0.02% sodium azide and 50% glycerol.
Purification Method	Antibodies were produced by immunizing rabbits with synthetic phosphopeptide and KLH conjugates. Antibodies were purified by affinity-chromatography using epitope-specific phosphopeptide. Non-phospho specific antibodies were removed by chromatography usi
Clonality	Polyclonal
Alias	PRMT4
Product Type	Polyclonal Antibody
Immunogen Species	Homo sapiens (Human)
Target Names	CARM1

Image



Western blot analysis of extracts from A431 cells untreated or treated with EGF (200ng/ml, 5min), using CARM1 (Ab-228) antibody (Line 1 and 2) and CARM1 (Phospho-Ser228) antibody (Line 3 and 4).



Immunofluorescence staining of methanol-fixed HeLa cells using CARM1 (Phospho-Ser228) antibody.



Product Modify

Phospho-Ser228

Usage

For Research Use Only. Not for use in diagnostic or therapeutic procedures.