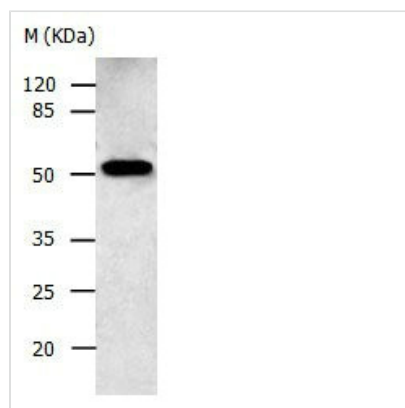




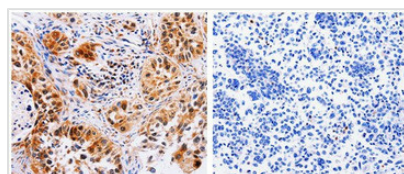
# AAK1 Antibody

|                            |  |
|----------------------------|--|
| <b>Product Code</b>        | CSB-PA183703   |
| <b>Storage</b>             | Upon receipt, store at -20°C or -80°C. Avoid repeated freeze.  |
| <b>Uniprot No.</b>         | Q2M2I8   |
| <b>Immunogen</b>           | Fusion protein corresponding to N terminal 236 amino acids of Human Adaptor-associated protein kinase 1  |
| <b>Raised In</b>           | Rabbit   |
| <b>Species Reactivity</b>  | Human,Mouse,Rat  |
| <b>Specificity</b>         | The antibody detects endogenous level of total AAK1 protein.   |
| <b>Tested Applications</b> | ELISA,WB,IHC;WB:1:500-1:1000,IHC:1:50-1:200  |
| <b>Form</b>                | Supplied at 1.1mg/mL in phosphate buffered saline (without Mg <sup>2+</sup> and Ca <sup>2+</sup> ), pH 7.3, 0.05% sodium azide and 50% glycerol. |
| <b>Clonality</b>           | Polyclonal   |
| <b>Alias</b>               | Adaptor-associated protein kinase 1, DKFZp686K16132, KIAA1048  |
| <b>Immunogen Species</b>   | Homo sapiens (Human)   |
| <b>Target Names</b>        | AAK1   |

## Image



Gel: 10%SDS-PAGE Lysate: 30 ug Human fetal brain tissue lysate Primary antibody: 1/500 dilution Secondary antibody: Donkey anti Rabbit IgG - H&L (HRP) at 1/3000 dilution Exposure time: 30 seconds



The image on the left is immunohistochemistry of paraffin-embedded Human lung cancer tissue using 31024 (AAK1 Antibody) at dilution 1/30, on the right is treated with the fusion protein.

## Usage

For Research Use Only. Not for use in diagnostic or therapeutic procedures.