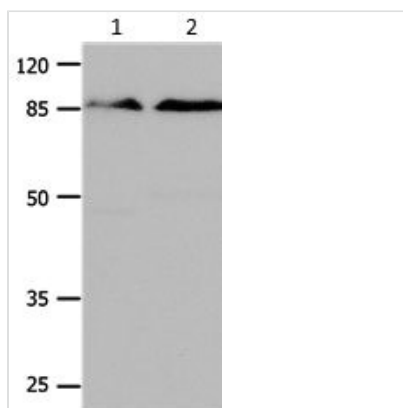




CTNNB1 Antibody

Product Code	CSB-PA284161
Storage	Upon receipt, store at -20°C or -80°C. Avoid repeated freeze.
Uniprot No.	P35222
Immunogen	Synthetic peptide corresponding to a region derived from 757-770 amino acids of Human Catenin beta-1
Raised In	Rabbit
Species Reactivity	Human,Mouse,Rat
Specificity	The antibody detects endogenous level of total CTNNB1 protein.
Tested Applications	ELISA,WB;WB:1:500-1:2000
Form	Supplied at 0.7mg/mL in phosphate buffered saline (without Mg ²⁺ and Ca ²⁺), pH 7.3, 0.05% sodium azide and 50% glycerol.
Clonality	Polyclonal
Alias	Catenin beta-1
Immunogen Species	Homo sapiens (Human)
Target Names	CTNNB1

Image



Gel: 10%SDS-PAGE
 Lane1: Mouse brain tissue lysate
 Lane2: Mouse lung tissue lysate
 Lysates: 24 ug per lane
 Primary antibody: 1/350 dilution
 Secondary antibody: Donkey anti Rabbit IgG - H&L (HRP) at 1/5000 dilution
 Exposure time: 1 minute

Usage

For Research Use Only. Not for use in diagnostic or therapeutic procedures.