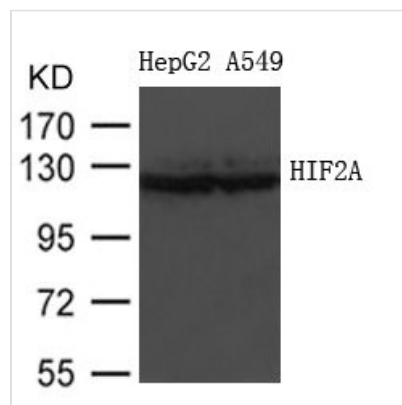




EPAS1 Antibody

Product Code	CSB-PA244646
Storage	Upon receipt, store at -20°C or -80°C. Avoid repeated freeze.
Uniprot No.	Q99814
Immunogen	Peptide sequence around aa.547-551(P-E-E-R-L) derived from HumanHIF2A.
Raised In	Rabbit
Species Reactivity	Human
Specificity	The antibody detects endogenous level of total HIF2A protein.
Tested Applications	ELISA,WB;WB:1:500-1:1000
Form	Supplied at 1.0mg/mL in phosphate buffered saline (without Mg ²⁺ and Ca ²⁺), pH 7.4, 150mM NaCl, 0.02% sodium azide and 50% glycerol.
Purification Method	Antibodies were produced by immunizing rabbits with synthetic peptide and KLH conjugates. Antibodies were purified by affinity-chromatography using epitope-specific peptide.
Clonality	Polyclonal
Alias	HLF; MOP2; ECVT4; HIF2A; PASD2
Product Type	Polyclonal Antibody
Immunogen Species	Homo sapiens (Human)
Target Names	EPAS1

Image



Western blot analysis of extracts from HepG2 and A549 cells using HIF2A Antibody.

Usage For Research Use Only. Not for use in diagnostic or therapeutic procedures.