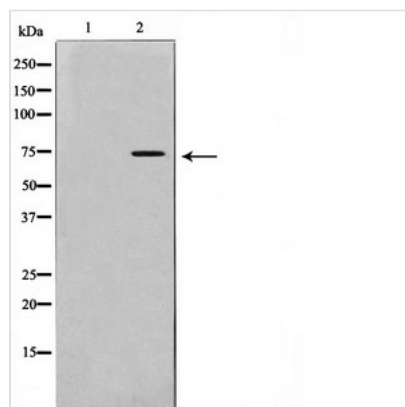




# IL2RB Antibody

<b>Product Code</b>	CSB-PA081831
<b>Storage</b>	Upon receipt, store at -20°C or -80°C. Avoid repeated freeze.
<b>Uniprot No.</b>	P14784
<b>Immunogen</b>	A synthesized peptide derived from Human IL-2Rbeta/CD122
<b>Raised In</b>	Rabbit
<b>Species Reactivity</b>	Human,Mouse,Rat
<b>Specificity</b>	IL-2Rbeta/CD122 antibody detects endogenous levels of total IL-2Rbeta/CD122
<b>Tested Applications</b>	ELISA,WB,IHC;WB:1:500-1:2000,IHC:1:50-1:200
<b>Form</b>	Rabbit IgG in phosphate buffered saline , pH 7.4, 150mM NaCl, 0.02% sodium azide and 50% glycerol.
<b>Purification Method</b>	Affinity-chromatography
<b>Clonality</b>	Polyclonal
<b>Alias</b>	CD122; CD122 antigen; high affinity IL-2 receptor beta subunit; High affinity IL-2 receptor subunit beta; IL-2 receptor subunit beta; IL-2R subunit beta; IL-2RB; IL2RB; interleukin 2 receptor, beta; Interleukin-2 receptor subunit beta
<b>Product Type</b>	Polyclonal Antibody
<b>Immunogen Species</b>	Homo sapiens (Human)
<b>Target Names</b>	IL2RB

## Image



Western blot analysis on HeLa cell lysate using IL-2Rbeta/CD122 antibody, The lane on the left is treated with the antigen-specific peptide.

## Usage

For Research Use Only. Not for use in diagnostic or therapeutic procedures.