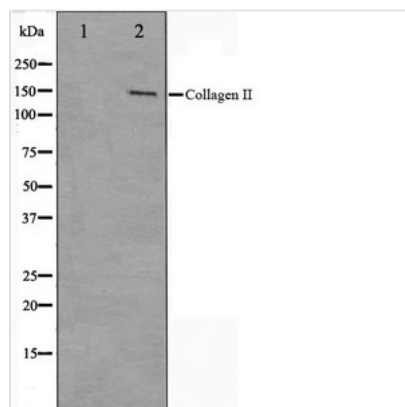




COL2A1 Antibody

Product Code	CSB-PA593434
Storage	Upon receipt, store at -20°C or -80°C. Avoid repeated freeze.
Uniprot No.	P02458
Immunogen	A synthesized peptide derived from Human Collagen II
Raised In	Rabbit
Species Reactivity	Human,Mouse,Rat
Specificity	Collagen II antibody detects endogenous levels of total Collagen II
Tested Applications	ELISA,WB,IHC;WB:1:500-1:2000,IHC:1:50-1:200
Form	Rabbit IgG in phosphate buffered saline , pH 7.4, 150mM NaCl, 0.02% sodium azide and 50% glycerol.
Purification Method	Affinity-chromatography
Clonality	Polyclonal
Alias	Alpha-1 type II collagen; ANFH; AOM; cartilage collagen; Chondrocalcin; CO2A1; COL11A3; COL2A1; Collagen alpha-1(II) chain; collagen II, alpha-1 polypeptide; collagen, type II, alpha 1; MGC131516; SEDC
Product Type	Polyclonal Antibody
Immunogen Species	Homo sapiens (Human)
Target Names	COL2A1

Image



Western blot analysis on COLO205 cell lysate using Collagen II Antibody

Usage

For Research Use Only. Not for use in diagnostic or therapeutic procedures.