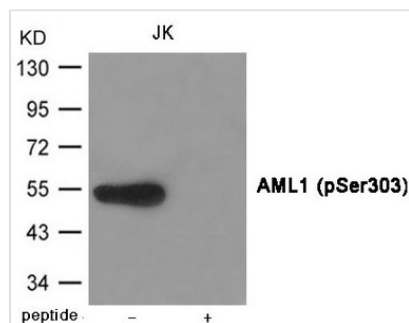




Phospho-RUNX1 (Ser303) Antibody

Product Code	CSB-PA126379
Storage	Upon receipt, store at -20°C or -80°C. Avoid repeated freeze.
Uniprot No.	Q01196
Immunogen	Peptide sequence around phosphorylation site of serine 303(T-A-F(p)-S-D) derived from Human AML1.
Raised In	Rabbit
Species Reactivity	Human,Mouse,Rat
Specificity	The antibody detects endogenous level of AML1 only when phosphorylated at Serine 303.
Tested Applications	ELISA,WB;WB:1:500-1:1000
Form	Supplied at 1.0mg/mL in phosphate buffered saline (without Mg ²⁺ and Ca ²⁺), pH 7.4, 150mM NaCl, 0.02% sodium azide and 50% glycerol.
Purification Method	Antibodies were produced by immunizing rabbits with synthetic phosphopeptide and KLH conjugates. Antibodies were purified by affinity-chromatography using epitope-specific phosphopeptide. Non-phospho specific antibodies were removed by chromatography usi
Clonality	Polyclonal
Alias	CBFA2, EVI-1, AMLCR1, PEBP2aB, AML1-EVI-1
Product Type	Polyclonal Antibody
Immunogen Species	Homo sapiens (Human)
Target Names	RUNX1

Image



Western blot analysis of extracts from JK cells using AML1 (Phospho-Ser303) Antibody. The lane on the right is treated with the antigen-specific peptide.

Product Modify	Phospho-Ser303
Usage	For Research Use Only. Not for use in diagnostic or therapeutic procedures.