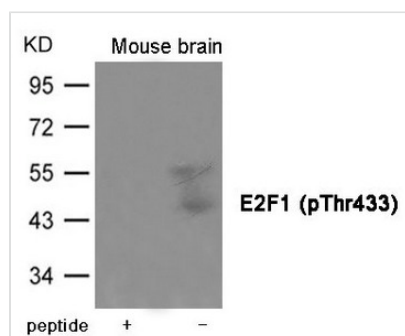




Phospho-E2F1 (Thr433) Antibody

Product Code	CSB-PA142360
Storage	Upon receipt, store at -20°C or -80°C. Avoid repeated freeze.
Uniprot No.	Q01094
Immunogen	Peptide sequence around phosphorylation site of Threonine 433(D-L-T(p)-P-L) derived from Human E2F1.
Raised In	Rabbit
Species Reactivity	Human,Mouse
Specificity	The antibody detects endogenous level of E2F1 only when phosphorylated at Threonine 433.
Tested Applications	ELISA,WB;WB:1:500-1:1000
Form	Supplied at 1.0mg/mL in phosphate buffered saline (without Mg ²⁺ and Ca ²⁺), pH 7.4, 150mM NaCl, 0.02% sodium azide and 50% glycerol.
Purification Method	Antibodies were produced by immunizing rabbits with synthetic phosphopeptide and KLH conjugates. Antibodies were purified by affinity-chromatography using epitope-specific phosphopeptide. Non-phospho specific antibodies were removed by chromatography using
Clonality	Polyclonal
Alias	E2F-1, PBR3, RBAP-1, RBBP-3
Product Type	Polyclonal Antibody
Immunogen Species	Homo sapiens (Human)
Target Names	E2F1

Image



Western blot analysis of extracts from Mouse brain tissue using E2F1 (Phospho-Thr433) Antibody. The lane on the left is treated with the antigen-specific peptide.

Product Modify Phospho-Thr433