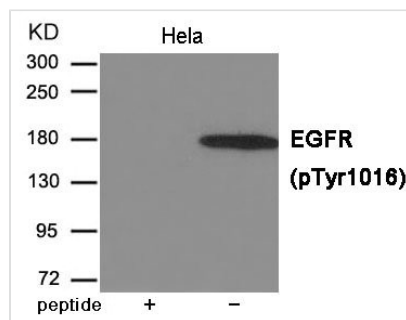




Phospho-EGFR (Tyr1016) Antibody

Product Code	CSB-PA559519
Storage	Upon receipt, store at -20°C or -80°C. Avoid repeated freeze.
Uniprot No.	P00533
Immunogen	Peptide sequence around phosphorylation site of Tyrosine 1016(D-E-Y(p)-L-I) derived from Human EGFR.
Raised In	Rabbit
Species Reactivity	Human,Mouse,Rat
Specificity	The antibody detects endogenous level of EGFR only when phosphorylated at Tyrosine 1016.
Tested Applications	ELISA,WB;WB:1:500-1:1000
Form	Supplied at 1.0mg/mL in phosphate buffered saline (without Mg ²⁺ and Ca ²⁺), pH 7.4, 150mM NaCl, 0.02% sodium azide and 50% glycerol.
Purification Method	Antibodies were produced by immunizing rabbits with synthetic phosphopeptide and KLH conjugates. Antibodies were purified by affinity-chromatography using epitope-specific phosphopeptide. Non-phospho specific antibodies were removed by chromatography using non-phosphopeptide.
Clonality	Polyclonal
Alias	ERBB, HER1, mENA, ERBB1, PIG61
Product Type	Polyclonal Antibody
Immunogen Species	Homo sapiens (Human)
Target Names	EGFR

Image



Western blot analysis of extracts from HeLa cells using EGFR (Phospho-Tyr1016) Antibody. The lane on the left is treated with the antigen-specific peptide.

Product Modify	Phospho-Tyr1016
Usage	For Research Use Only. Not for use in diagnostic or therapeutic procedures.