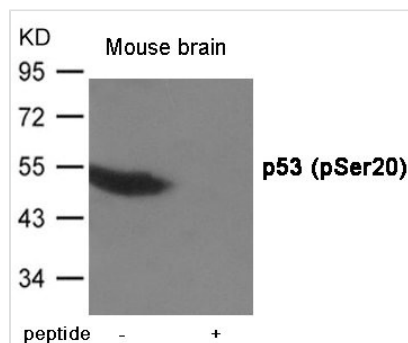




Phospho-TP53 (Ser20) Antibody

Product Code	CSB-PA226168
Storage	Upon receipt, store at -20°C or -80°C. Avoid repeated freeze.
Uniprot No.	P04637
Immunogen	Peptide sequence around phosphorylation site of Serine 20(T-F-S(p)-D-L) derived from Human p53.
Raised In	Rabbit
Species Reactivity	Human,Mouse,Rat
Specificity	The antibody detects endogenous level of p53 only when phosphorylated at Serine 20.
Tested Applications	ELISA,WB;WB:1:500-1:1000
Form	Supplied at 1.0mg/mL in phosphate buffered saline (without Mg ²⁺ and Ca ²⁺), pH 7.4, 150mM NaCl, 0.02% sodium azide and 50% glycerol.
Purification Method	Antibodies were produced by immunizing rabbits with synthetic phosphopeptide and KLH conjugates. Antibodies were purified by affinity-chromatography using epitope-specific phosphopeptide. Non-phospho specific antibodies were removed by chromatography usi
Clonality	Polyclonal
Alias	P53, BCC7, LFS1, TRP53,
Product Type	Polyclonal Antibody
Immunogen Species	Homo sapiens (Human)
Target Names	TP53

Image



Western blot analysis of extracts from Mouse brain tissue using p53 (Phospho-Ser20) Antibody. The lane on the right is treated with the antigen-specific peptide.

Product Modify	Phospho-Ser20
Usage	For Research Use Only. Not for use in diagnostic or therapeutic procedures.