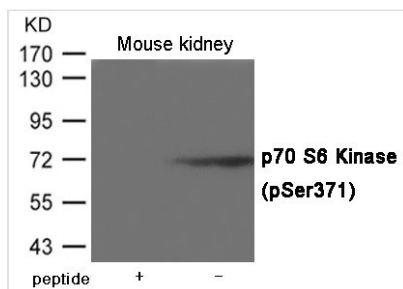




Phospho-RPS6KB1 (Ser371) Antibody

Product Code	CSB-PA061411
Storage	Upon receipt, store at -20°C or -80°C. Avoid repeated freeze.
Uniprot No.	P23443
Immunogen	Peptide sequence around serine 371 (V-D-S(p)-P-D) derived from Human p70 S6 Kinase.
Raised In	Rabbit
Species Reactivity	Human,Mouse,Rat
Specificity	The antibody detects endogenous level of p70 S6 Kinase only when phosphorylated at Serine 371.
Tested Applications	ELISA,WB;WB:1:500-1:1000
Form	Supplied at 1.0mg/mL in phosphate buffered saline (without Mg ²⁺ and Ca ²⁺), pH 7.4, 150mM NaCl, 0.02% sodium azide and 50% glycerol.
Purification Method	Antibodies were produced by immunizing rabbits with synthetic phosphopeptide and KLH conjugates. Antibodies were purified by affinity-chromatography using epitope-specific phosphopeptide. Non-phospho specific antibodies were removed by chromatography usi
Clonality	Polyclonal
Alias	S6K, PS6K, S6K1, STK14A, p70-S6K
Product Type	Polyclonal Antibody
Immunogen Species	Homo sapiens (Human)
Target Names	RPS6KB1

Image



Western blot analysis of extracts from Mouse kidney tissue using p70 S6 Kinase (Ser371) Antibody. The lane on the left is treated with the antigen-specific peptide.

Product Modify	Phospho-Ser371
Usage	For Research Use Only. Not for use in diagnostic or therapeutic procedures.