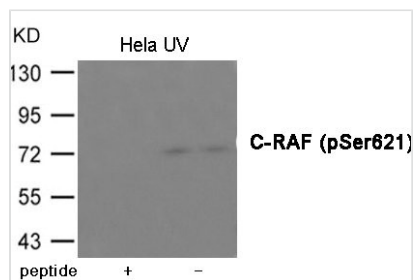




Phospho-RAF1 (Ser621) Antibody

Product Code	CSB-PA445340
Storage	Upon receipt, store at -20°C or -80°C. Avoid repeated freeze.
Uniprot No.	P04049
Immunogen	Peptide sequence around phosphorylation site of Serine 621(S-A-S(p)-E-P) derived from Human C-RAF.
Raised In	Rabbit
Species Reactivity	Human,Mouse,Rat
Specificity	The antibody detects endogenous level of C-RAF only when phosphorylated at Serine 621.
Tested Applications	ELISA,WB;WB:1:500-1:1000
Form	Supplied at 1.0mg/mL in phosphate buffered saline (without Mg ²⁺ and Ca ²⁺), pH 7.4, 150mM NaCl, 0.02% sodium azide and 50% glycerol.
Purification Method	Antibodies were produced by immunizing rabbits with synthetic phosphopeptide and KLH conjugates. Antibodies were purified by affinity-chromatography using epitope-specific phosphopeptide. Non-phospho specific antibodies were removed by chromatography usi
Clonality	Polyclonal
Alias	NS5, CRAF, Raf-1, c-Raf
Product Type	Polyclonal Antibody
Immunogen Species	Homo sapiens (Human)
Target Names	RAF1

Image



Western blot analysis of extracts from HeLa cells treated with UV using C-RAF (Phospho-Ser621) Antibody. The lane on the left is treated with the antigen-specific peptide.

Product Modify	Phospho-Ser621
Usage	For Research Use Only. Not for use in diagnostic or therapeutic procedures.