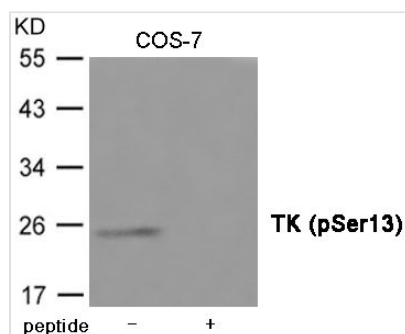




Phospho-TK1 (Ser13) Antibody

Product Code	CSB-PA016378
Storage	Upon receipt, store at -20°C or -80°C. Avoid repeated freeze.
Uniprot No.	P04183
Immunogen	Peptide sequence around phosphorylation site of Serine 13(P-G-S(p)-P-S) derived from Human TK.
Raised In	Rabbit
Species Reactivity	Human,Mouse,Rat,Monkey
Specificity	The antibody detects endogenous level of TK only when phosphorylated at Serine 13.
Tested Applications	ELISA,WB;WB:1:500-1:1000
Form	Supplied at 1.0mg/mL in phosphate buffered saline (without Mg ²⁺ and Ca ²⁺), pH 7.4, 150mM NaCl, 0.02% sodium azide and 50% glycerol.
Purification Method	Antibodies were produced by immunizing rabbits with synthetic phosphopeptide and KLH conjugates. Antibodies were purified by affinity-chromatography using epitope-specific phosphopeptide. Non-phospho specific antibodies were removed by chromatography using
Clonality	Polyclonal
Alias	TK2
Product Type	Polyclonal Antibody
Immunogen Species	Homo sapiens (Human)
Target Names	TK1

Image



Product Modify Phospho-Ser13