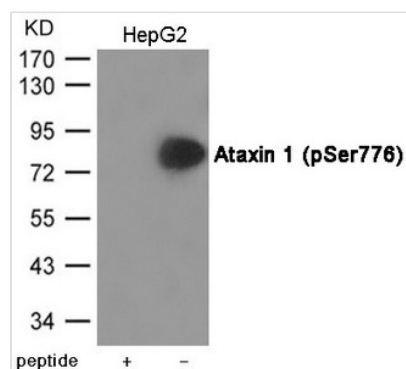




Phospho-ATXN1 (Ser776) Antibody

Product Code	CSB-PA597893
Storage	Upon receipt, store at -20°C or -80°C. Avoid repeated freeze.
Uniprot No.	P54253
Immunogen	Peptide sequence around phosphorylation site of Serine 776(R-W-S(p)-A-P) derived from Human Ataxin 1.
Raised In	Rabbit
Species Reactivity	Human,Mouse
Specificity	The antibody detects endogenous level of Ataxin 1 only when phosphorylated at Serine 776.
Tested Applications	ELISA,WB;WB:1:500-1:1000
Form	Supplied at 1.0mg/mL in phosphate buffered saline (without Mg ²⁺ and Ca ²⁺), pH 7.4, 150mM NaCl, 0.02% sodium azide and 50% glycerol.
Purification Method	Antibodies were produced by immunizing rabbits with synthetic phosphopeptide and KLH conjugates. Antibodies were purified by affinity-chromatography using epitope-specific phosphopeptide. Non-phospho specific antibodies were removed by chromatography usi
Clonality	Polyclonal
Alias	ATX1, D6S504E, SCA1
Product Type	Polyclonal Antibody
Immunogen Species	Homo sapiens (Human)
Target Names	ATXN1

Image



Western blot analysis of extracts from HepG2 cells using Ataxin 1 (Phospho-Ser776) Antibody. The lane on the left is treated with the antigen-specific peptide.

Product Modify	Phospho-Ser776
Usage	For Research Use Only. Not for use in diagnostic or therapeutic procedures.