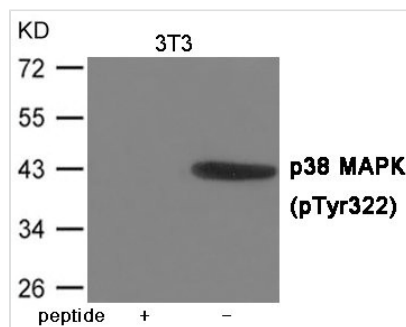




# Phospho-MAPK14 (Tyr322) Antibody

<b>Product Code</b>	CSB-PA973394
<b>Storage</b>	Upon receipt, store at -20°C or -80°C. Avoid repeated freeze.
<b>Uniprot No.</b>	Q16539
<b>Immunogen</b>	Peptide sequence around phosphorylation site of Tyrosine 322(D-P-Y(p)-D-Q) derived from Human p38 MAPK.
<b>Raised In</b>	Rabbit
<b>Species Reactivity</b>	Human,Mouse,Rat
<b>Specificity</b>	The antibody detects endogenous level of p38 MAPK only when phosphorylated at Tyrosine 322.
<b>Tested Applications</b>	ELISA,WB;WB:1:500-1:1000
<b>Form</b>	Supplied at 1.0mg/mL in phosphate buffered saline (without Mg <sup>2+</sup> and Ca <sup>2+</sup> ), pH 7.4, 150mM NaCl, 0.02% sodium azide and 50% glycerol.
<b>Purification Method</b>	Antibodies were produced by immunizing rabbits with synthetic phosphopeptide and KLH conjugates. Antibodies were purified by affinity-chromatography using epitope-specific phosphopeptide. Non-phospho specific antibodies were removed by chromatography usi
<b>Clonality</b>	Polyclonal
<b>Alias</b>	RK, p38, CSBP, EXIP, Mxi2
<b>Product Type</b>	Polyclonal Antibody
<b>Immunogen Species</b>	Homo sapiens (Human)
<b>Target Names</b>	MAPK14

## Image



Western blot analysis of extracts from 3T3 cells using p38 MAPK (Phospho-Tyr322) Antibody. The lane on the left is treated with the antigen-specific peptide.

<b>Product Modify</b>	Phospho-Tyr322
<b>Usage</b>	For Research Use Only. Not for use in diagnostic or therapeutic procedures.