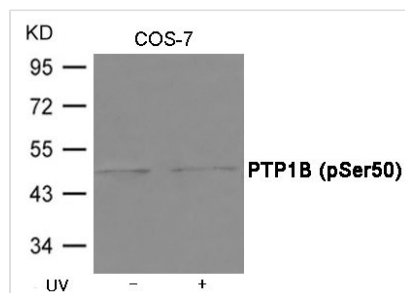




Phospho-PTPN1 (Ser50) Antibody

Product Code	CSB-PA129081
Storage	Upon receipt, store at -20°C or -80°C. Avoid repeated freeze.
Uniprot No.	P18031
Immunogen	Peptide sequence around phosphorylation site of Serine 50(D-V-S(p)-P-F) derived from Human PTP1B.
Raised In	Rabbit
Species Reactivity	Human,Mouse,Rat,Monkey
Specificity	The antibody detects endogenous level of PTP1B only when phosphorylated at Serine 50.
Tested Applications	ELISA,WB;WB:1:500-1:1000
Form	Supplied at 1.0mg/mL in phosphate buffered saline (without Mg ²⁺ and Ca ²⁺), pH 7.4, 150mM NaCl, 0.02% sodium azide and 50% glycerol.
Purification Method	Antibodies were produced by immunizing rabbits with synthetic phosphopeptide and KLH conjugates. Antibodies were purified by affinity-chromatography using epitope-specific phosphopeptide. Non-phospho specific antibodies were removed by chromatography usi
Clonality	Polyclonal
Alias	PTP1B
Product Type	Polyclonal Antibody
Immunogen Species	Homo sapiens (Human)
Target Names	PTPN1

Image



Western blot analysis of extracts from COS-7 cells untreated or treated with UV using PTP1B (Phospho-Ser50) Antibody .

Product Modify Phospho-Ser50