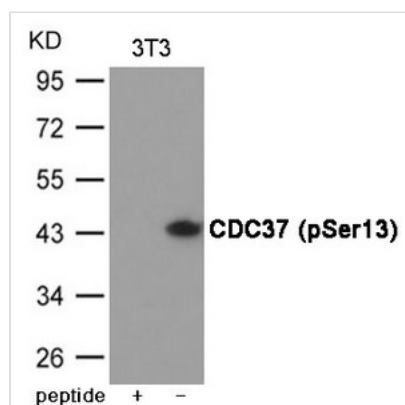




Phospho-CDC37 (Ser13) Antibody

Product Code	CSB-PA581110
Storage	Upon receipt, store at -20°C or -80°C. Avoid repeated freeze.
Uniprot No.	Q16543
Immunogen	Peptide sequence around phosphorylation site of Serine 13(E-V-S(p)-D-D) derived from Human CDC37.
Raised In	Rabbit
Species Reactivity	Human,Mouse,Rat
Specificity	The antibody detects endogenous level of CDC37 only when phosphorylated at Serine 13.
Tested Applications	ELISA,WB;WB:1:500-1:1000
Form	Supplied at 1.0mg/mL in phosphate buffered saline (without Mg ²⁺ and Ca ²⁺), pH 7.4, 150mM NaCl, 0.02% sodium azide and 50% glycerol.
Purification Method	Antibodies were produced by immunizing rabbits with synthetic phosphopeptide and KLH conjugates. Antibodies were purified by affinity-chromatography using epitope-specific phosphopeptide. Non-phospho specific antibodies were removed by chromatography usi
Clonality	Polyclonal
Alias	P50CDC37
Product Type	Polyclonal Antibody
Immunogen Species	Homo sapiens (Human)
Target Names	CDC37

Image



Western blot analysis of extracts from 3T3 cells using CDC37 (Phospho-Ser13) Antibody. The lane on the left is treated with the antigen-specific peptide.

Product Modify	Phospho-Ser13
Usage	For Research Use Only. Not for use in diagnostic or therapeutic procedures.