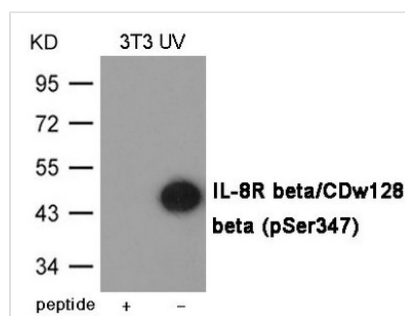




# Phospho-CXCR2 (Ser347) Antibody

<b>Product Code</b>	CSB-PA974167
<b>Storage</b>	Upon receipt, store at -20°C or -80°C. Avoid repeated freeze.
<b>Uniprot No.</b>	P25025
<b>Immunogen</b>	Peptide sequence around phosphorylation site of Serine 347(R-P-S(p)-F-V) derived from Human IL-8R beta/CDw128 beta
<b>Raised In</b>	Rabbit
<b>Species Reactivity</b>	Human,Mouse
<b>Specificity</b>	The antibody detects endogenous level of IL-8R beta/CDw128 beta only when phosphorylated at Serine 347.
<b>Tested Applications</b>	ELISA,WB;WB:1:500-1:1000
<b>Form</b>	Supplied at 1.0mg/mL in phosphate buffered saline (without Mg <sup>2+</sup> and Ca <sup>2+</sup> ), pH 7.4, 150mM NaCl, 0.02% sodium azide and 50% glycerol.
<b>Purification Method</b>	Antibodies were produced by immunizing rabbits with synthetic phosphopeptide and KLH conjugates. Antibodies were purified by affinity-chromatography using epitope-specific phosphopeptide. Non-phospho specific antibodies were removed by chromatography
<b>Clonality</b>	Polyclonal
<b>Alias</b>	CD182, IL8R2, IL8RA, IL8RB, CMKAR2
<b>Product Type</b>	Polyclonal Antibody
<b>Immunogen Species</b>	Homo sapiens (Human)
<b>Target Names</b>	CXCR2

## Image



Western blot analysis of extracts from 3T3 cells treated with UV using IL-8R beta/CDw128 beta (Phospho-Ser347) Antibody. The lane on the left is treated with the antigen-specific peptide.

**Product Modify** Phospho-Ser347