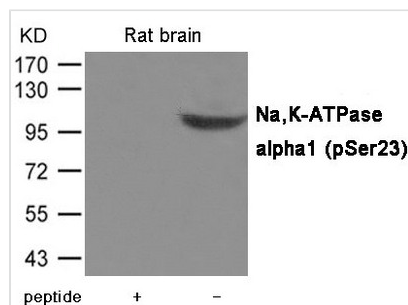




Phospho-ATP1A1 (Ser23) Antibody

Product Code	CSB-PA909235
Storage	Upon receipt, store at -20°C or -80°C. Avoid repeated freeze.
Uniprot No.	P05023
Immunogen	Peptide sequence around phosphorylation site of Serine 23 (K-K-G(p)-K-K) derived from Rat Na,K-ATPase alpha1.
Raised In	Rabbit
Species Reactivity	Rat
Specificity	The antibody detects endogenous level of Na,K-ATPase alpha1 only when phosphorylated at Serine 23.
Tested Applications	ELISA,WB;WB:1:500-1:1000
Form	Supplied at 1.0mg/mL in phosphate buffered saline (without Mg2+ and Ca2+), pH 7.4, 150mM NaCl, 0.02% sodium azide and 50% glycerol.
Purification Method	Antibodies were produced by immunizing rabbits with synthetic phosphopeptide and KLH conjugates. Antibodies were purified by affinity-chromatography using epitope-specific phosphopeptide. Non-phospho specific antibodies were removed by chromatography using
Clonality	Polyclonal
Alias	Nkaa1b
Product Type	Polyclonal Antibody
Immunogen Species	Homo sapiens (Human)
Target Names	ATP1A1

Image



Western blot analysis of extracts from Rat brain tissue using Na,K-ATPase alpha1(Phospho-Ser23) Antibody. The lane on the left is treated with the antigen-specific peptide.

Product Modify Phospho-Ser23